

# LIYOND

# INDOOR ELECTROMAGNETIC LOCK SERIES

□□□ DSN Indoor electromagnetic lock series

DSN- I type indoor electromagnetic switch lock

Execution standard:JB/T7827-95

### Purpose and scope

This product is a kind of high voltage switch equipment electrical wrong operation of electric interlocking device, mainly used for human operation indoor isolating switch, is adopted to realize it with electric interlocking between circuit breaker and other safety interlock need to implement compulsory interlock, prevent maloperation, is indispensable to power generation and power supply department of locking device.

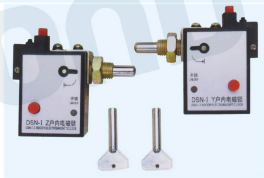
### Using the environment conditions

Ambient temperature: ceiling not more than 40 DHS C +, under the limit of not less than 25 DHS C, special areas not under - DHS 35 C.

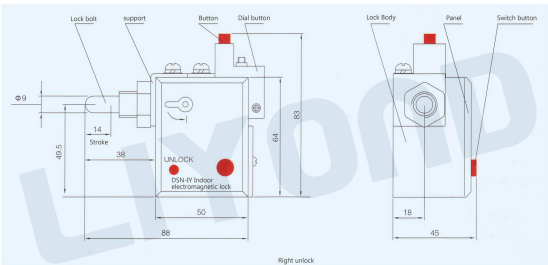
Altitude: installation area is not higher than 1000 m above sea level

Atmospheric conditions: air relative humidity, average no greater than 95%, on average no greater than 90%; Water vapor pressure, average no more than 2.2 kPa, the monthly average no more than 1.8 KPa .

Environmental conditions: no obvious impurity, no inflammable, explosive chemical corrosion and salt fog.



### Install the appearance, size and back view the wiring diagram



### Models and meaning



# LIYOND

# INDOOR ELECTROMAGNETIC LOCK SERIES

Indoor electromagnetic lock (Switching mechanism) choose and basic parameters  
(When ordering please indicate the agency locking pin screw hole diameter and pitch)

Order number	Product Model	Rated voltage	Rated Current	Rated Power	Mounting Bracket Thread specification	Lock stroke	Remark
D-1	DSN-Z	AC 220V	100mA	<3VA	M14 M16	14mm	Three kinds of power supply voltage
		DC 220V	196mA	<50W			
D-2	DSN-Y	DC 110V	98mA	<12W			
D-3	DSN-Z6						Designed with our company continuous dc power, suitable for field repair when no secondary operation power, improve product performance by mistake
D-4	DSN-Y6	DC 6V	400mA	<2.5W			

## Installation steps

Two M5 screws to fix fastening pieces first break out, make the lock body and fixed a separation, and then fixed a lock lock hole precision institutions and nut tightening, with the M5 inner hexangular set screw lock body fixed on the fixing parts, pay attention to lock operation to be flexible.

## Method of use

(1) Normal operation steps:

A, Lift the lock switch, circuit connected, electromagnet coil electricity action, moving iron core from the lock block, the lock indicator, that allows the lock.

B, Toggle dial in the direction of the lock button (on the left side of the lock to the left and the right side of the lock to the right), when to the limit position, press the red button on the left button, lock the lock is locked in the open position, the operation can be locked operator at this moment, if you want to block, the artificial toggle dial button (right away to the right and left open to the left), makes the automatic reset buttons or institutions a collision lock head, lock can be reset automatically.

(2) Manual unlock step:

A, Lift the button, the power is blocking circuit forced cut, the lock indicator is not on, moving iron core stuck lock block, that is not allowed to open the lock;

B, Special circumstances must be unlock, to get an unlock key and insert the unlocking hole, turned the key in the direction shown by the panel marked 90 DHS to "a" or "stop", anchored off a lock of moving iron core block, the toggle button to unlock, to meet the "manual unlock" function.

(3) Lock insurance:

In the lock position to the insurance of the M4 screw on the dial button into, into guide hole and the end, even if the lock objects have unlocked condition, also as long as have the aid of a special tool to unlock, to meet the "lock insurance" function.

Note: to unlock the key to unlock process, it is anchored off a lock of moving iron core block, to remove the effect of blocking state, and the lock must use dial button or lever to move the lock bolt, achieve the lock, so you can't directly with the unlock key lock.

# LIYOND

# INDOOR ELECTROMAGNETIC LOCK SERIES

## □□□ DSN Indoor electromagnetic lock series

**DSN-A (B) M type indoor electromagnetic locks**  
 Structure features: adopts integral structure, installation without separating the panel and lock body  
 Execution standard: JB/T7827-95

### Purpose and scope

This product is a kind of high voltage switch equipment electrical wrong operation of electric interlocking device, mainly used for high voltage switchgear cabinet and other safety interlock need to implement mandatory interlocking, prevent into charged interval and wrong operation, is the locking device of power production and supply department.

### Using the environment conditions

Ambient temperature: the upper limit of no more than +40 ° C, the lower limit of not less than -25 ° C, a special area of not less than -35 ° C

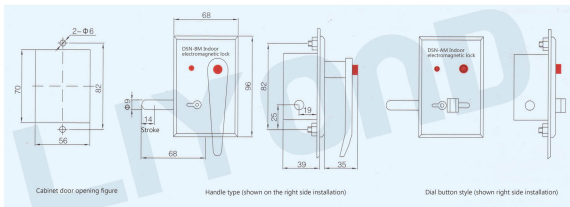
Altitude: installation area is not higher than 1000 m above sea level

Atmospheric conditions: air relative humidity, average no greater than 95%, on average no greater than 90%; Water vapor pressure, average no more than 2.2 kPa

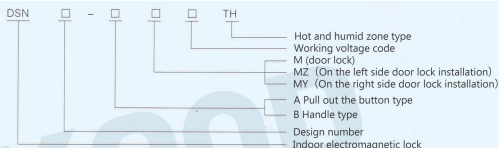
Environmental conditions: no obvious impurity, no inflammable, explosive chemical corrosion and salt fog.



### Install and open hole size shape



### Models and meaning



Note: The installation of the so-called left side or right side installation, means the operator lock the object-oriented (such as operating lever, cabinet fixed part), corresponding to the installation location. When the electromagnetic lock installation location on the lock object were located in the left-oriented operation that is installed on the left, on the contrary, is the right of the installation.

# LIYOND

# INDOOR ELECTROMAGNETIC LOCK SERIES

Indoor electromagnetic lock is chosen, and basic parameters

Order No.	Product Model Specification	Rated voltage	Rated Current	Rated Power	Cupboard door opening size	Cupboard door installation size	Latch trip	Remark
D-5	DSN-AMZ	AC 220V DC 220V DC 110V	100mA	<3VA	56 × 70 mm	Diameter φ 6  Pitch 82 mm	14 mm	Structure of new type electromagnet, therefore three kinds of coil voltage level
D-6	DSN-AMY		196mA	<50W				
D-7	DSN-BMZ		98mA	<12W				
D-8	DSN-BMY							
D-9	DSN-AMZ6	DC 6V	400mA	<2.5W				Designed with my company uninterruptible power supply, suitable for field repair when no secondary power operation, improve the product of form a complete set of error prevention performance
D-10	DSN-AMY6							
D-11	DSN-BMZ6							
D-12	DSN-BMY6							

## Electromagnetic lock installation steps

- 1, in order to unload panel installation M5 nut on the screw, spring washers, flat pad;
- 2, from outside the cupboard door lock body lock side in the open hole first, then turn the lock body on the panel on the installation of the screw into the cupboard door open good  $\Phi$  6 mm hole, and the lock panel and cupboard door plate flat;
- 3, inside of door of cupboard of park of from in turn plain washers, spring washers, M5 nut M5 screw lock on the front panel, and finally tighten nut M5.

## Electromagnetic locks Instructions for use

### (1) normal operation steps

A, lift the button, the power supply connected, electromagnet coil electricity action, moving iron core from the lock block, the lock indicator, that allows the lock.

B, turn the handle towards the lock (left side clockwise, counterclockwise) right, continue to exert oneself to do, when to limit position lock switch will automatically lock the lock open position, can open cupboard door. If you don't have to lock open position, the lock will automatically return to the lock position and meet the automatic reset function, such as lock the lock in the open position, need to artificially will turn the handle to open the lock in the opposite direction, namely lock return to lock in position, so as to meet the blocking state.

Note: A, B lock appearance and installation dimensions are the same

Operation method: A, toggle button B, pull the lever

### (2) manual unlock step:

A, lift the button, the power is locking loop force disconnect, lock indicator is not on, moving iron core stuck lock block, will show that are not allowed to open the lock;

B, special circumstances must be unlock, to get an unlock key, insert the unlock empty inside, turned the key in the direction shown by the panel marked 90 DHS to "a" or "a", anchored off a lock of moving iron core block;

C, (with normal operation steps step B), in order to meet the "manual unlock" function.

Note: to unlock the key to unlock process, it is anchored off a lock of moving iron core block, to remove the effect of blocking state, and the lock must use dial button or lever to move the lock bolt, achieve the lock, so you can't directly with the unlock key lock.



# INDOOR ELECTROMAGNETIC LOCK SERIES

□□□ DSN Indoor electromagnetic lock series

DSN - CM indoor electromagnetic locks  
Structure features: adopts integral structure, installation without separating the panel and lock body  
Execution standard: JB/T7827-95

## Purpose and scope

This product is a way to prevent the switchgear to the incorrect operation electric interlocking device, mainly used for box-type substation, ring net switch cabinets and other outdoor place without secondary power implementation forced interlock, prevent into charged interval and wrong operation, is the locking device of power production and supply department. With functions of charged two directives and atresia.

## Working principle

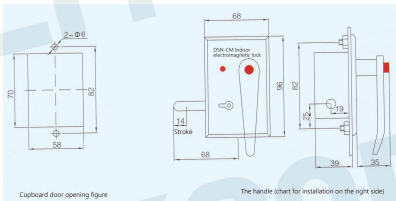
Inside the box transformer substation, the ring net switch cabinets under the condition of charged, the input of the voltage signal into electromagnetic lock, a charged indicator, electromagnetic lock can't open the lock, the box-type substation, ring net switch cabinets and low pressure switch cabinet internal loss of electric power, no voltage signal input end of electromagnetic lock, electric light is extinguished, electromagnetic lock can be unlocked. With functions of charged two directives and atresia.



## Using the environment conditions

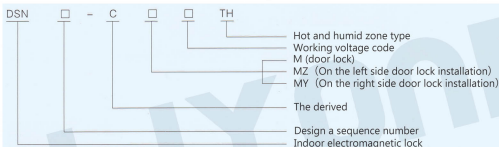
Ambient temperature: up to +40 °C  
Lower the general area -10 °C, -25 °C alpine region  
Altitude: not more than 1000m above sea level Area  
Humidity: relative humidity of air on average less than 95%, on average less than 90%  
Environmental conditions: no significant contamination, non-flammable, explosive, chemical corrosion and salt spray spaces and no recurring violent vibration.

## Install and open hole size shape



# LIYOND INDOOR ELECTROMAGNETIC LOCK SERIES

## Models and meaning



Note: The so-called installed the left or right, series operator lock the object oriented (such as lever, cabinet put oneself in another's position fixed part), and the corresponding installation position When electromagnetic locks in the lock on the object location, located in the operator to the left is on the left side of the installation, on the other hand, is on the right side of the installation.

## Indoor electromagnetic lock is chosen, and basic parameters (When ordering please indicate the order number)

Order number	Product Model Specification	Input Voltage	Rated Current	Rated Power	Cupboard door opening size	Cupboard door installation size	Latch trip	Remark
D-21	DSN-CMY	AC 220V	196mA	<30VA	58 × 70mm	Diameter Φ6 Pitch 82 mm	14 mm	Adopting new type electromagnetic iron structure, So three voltage level coils are common.
D-22	DSN-CMZ							

## Electromagnetic lock installation steps

- 1, in order to unload panel installation M5 nut on the screw, spring washers, flat pad;
- 2, from outside the cupboard door lock body lock side in the open hole first, then turn the lock body on the panel on the installation of the screw into the cupboard door open good  $\Phi$  6 mm hole, and the lock panel and cupboard door plate stick flat;
- 3, Inside of door of cupboard of park of from in turn plain washers, spring washers, M5 nut installed on the panel of the M5 screw, finally tighten nut M5.

## The use instructions of electromagnetic locks

### (1)normal lock instructions

A, charged light is put out, lift the button, turn the handle towards the lock open clockwise direction (left or right counterclockwise), continue to exert oneself to do, when to limit position lock switch will automatically lock the lock open position, need to artificially will turn the handle to open the lock in the opposite direction, namely lock return to lock in position, so as to meet the blocking state.

B, charged indicator, lift the button, the handle cannot turn, electromagnetic lock can't open the lock.

Operation method: pull the handle

### (2)manual unlock step:

A, emergency unlocking hole to insert the unlock key, turned the key in the direction shown by the panel instructions 90 DHS to "A" or "A", anchored off A lock of moving iron core block;

B, lift the button, turn the handle towards the lock open clockwise direction (left or right counterclockwise), continue to exert oneself to do, when to limit position lock switch will automatically lock the lock open position, can open cupboard door.

Note: to unlock the key to unlock process, it is anchored off a lock of moving iron core block, to remove the effect of blocking state, and the lock must use the handle to open mobile lock, achieve the lock, so you can't directly with the unlock key lock.

# LIYOND INDOOR ELECTROMAGNETIC LOCK SERIES

□□□ DSN Indoor electromagnetic lock series

DSN-DM type indoor electromagnetic lock

Execution standard: JB/T7827-95 IEC 61958:2000 DL/T538

## Summarize

DSN - DM type indoor electromagnetic lock is used for 3.6 ~ 40.5 KV rated voltage and frequency of 50 hz indoor high voltage electrical equipment. With pillar type voltage sensor, used to run personnel provide information on the condition of the circuit voltage switch equipment installation place and function of subject to compulsory atresia, assembly before all kinds of switch cabinet, the back door and other parts need to be blocking, prevent electrical wrong operation, prevent into charged interval, improve the product of form a complete set of error prevention performance. Warning: only by the display of charged display device was not enough to prove the system has not been charged; Like to run the program as a mandatory requirements, should also be used in accordance with the relevant IEC 61243 voltage detector or voltage detection device.



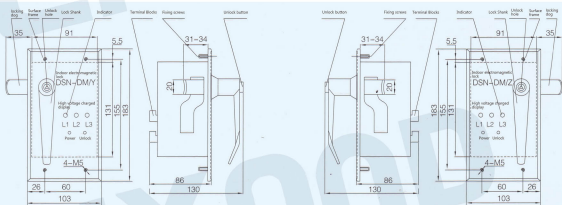
## Using the environment conditions

Ambient temperature: the upper limit of no more than +40 ° C, the lower limit of not less than -25 ° C, a special area of not less than -35 ° C  
 Altitude: not more than 1000m above sea level Area  
 Atmospheric conditions: air relative humidity on average less than 95%, on average less than 90%; daily average water vapor pressure less than 2.2kPa, on average less than 1.8kPa  
 Environmental conditions: no significant contamination, non-flammable, explosive chemicals and salt spray spaces

## Product Features

- ☆ Unlock the direction and lock in the same direction, unlock keys can be used to after the unlock, continue to spin can directly open the lock, convenient operation.

## Install the appearance, size and back view the wiring diagram



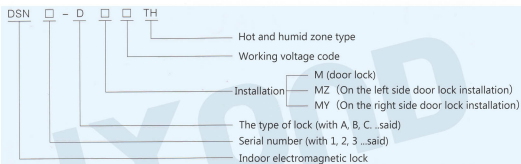
Note: Dashed size switchgear hole size 131 × 91  
 Open the right in Figure 1 (on the left side of the door)

Note: Dashed size switchgear hole size 131 × 91  
 Open the left in Figure 2 (on the right side of the door)



# INDOOR ELECTROMAGNETIC LOCK SERIES

## Models and meaning



Note: the so-called installed the left or right, refers to the operator to lock objects (such as lever, cabinet put oneself in another's position fixed part), the corresponding installation position. When electromagnetic locks in the lock on the object location, is located in the operator to the left side is the left side of the installation, on the other hand, is on the right side of the installation.

## Electromagnetic lock selection and basic parameters

Order number	Model	Electromagnetic lock according to the luminous component			Electromagnetic lock Operating Voltage (V)	Installation	Dimensions and installation hole size chart	Back as the wiring diagram	Remark
		Type	Operating Voltage (V)	Effective life (h)					
D-13	DSN-DMY1	Ultra-high brightness light-emitting tube	<DC2.5	>30000	AC220	Right open	Figure 1	Figure 3	Designed with uninterruptible power supply.
D-14	DSN-DMY3				DC220	Right open	Figure 1		
D-15	DSN-DMY4				AC110	Right open	Figure 2		
D-16	DSN-DMZ1				AC220	Left open	Figure 2		
D-17	DSN-DMZ3				DC110	Left open	Figure 2		
D-18	DSN-DMZ4				AC110	Left open	Figure 1		
D-19	DSN-DMY6				DC6	Right open	Figure 2		
D-20	DSN-DMZ6				DC6	Left open	Figure 2		

## Back view the wiring diagram



## Ordering instructions

- To order this product, please indicate the type, voltage sensor model, please refer to our company sample voltage sensor.
- If you have special requirements can be negotiated with our company.



# LIYOND

# INDOOR ELECTROMAGNETIC LOCK SERIES

□□□ DSN Indoor electromagnetic lock series

DSN - J indoor electromagnetic lock (Earthing switch) institutions

Execution standard:JB/T7827-95

### Purpose and scope

This product is a way to prevent wrong operation of earthing switch in high-voltage switch equipment of electric interlocking device, the product structure is compact, easy installation, simple to use and reliable.

### Normal operating conditions

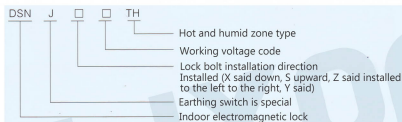
Ambient air temperature: the upper limit +40 ° C,  
Lower: General region -10 ° C, -25 ° C alpine region  
Altitude: not more than 1000m above sea level Area  
Atmospheric conditions: air relative humidity on average less than 95%,  
On average less than 90%;  
Environmental conditions: no significant contamination, non-flammable, explosive chemicals and salt spray spaces and no recurring violent vibration.



Indoor electromagnetic lock (Earthing switch) is chosen and basic parameters

Order number	Product model specifications	Lock bolt installation direction	Rated voltage	Rated Current	Rated Power	Latch trip	Remark
D-21	DSN-JX	Lock down the installation	AC220V	100mA	<3VA	28mm	Three kinds power voltage Universal
D-22	DSN-JS	Lock up the installation					
D-23	DSN-JZ	Lock left the installation	DC220V	196mA	<50W		
D-24	DSN-JY	Lock right the installation	DC110V	98mA	<12W		

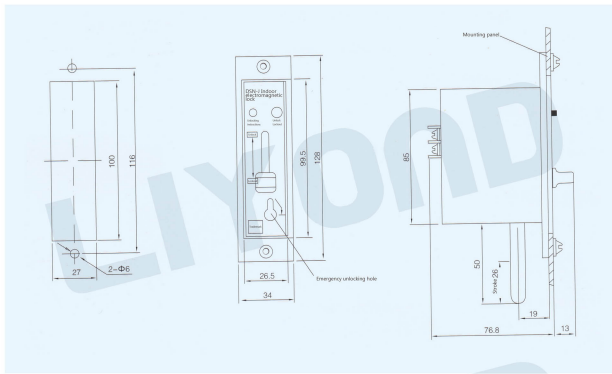
### Models and meaning



# LIYOND

# INDOOR ELECTROMAGNETIC LOCK SERIES

## Appearance and installation dimensions



## Installation steps

- 1, In order to unload panel installation M5 nut on the screw, spring washers, flat pad;
- 2, From the cupboard door outside introversion inserted into the installation hole;
- 3, Adjust and tighten the nut.

## Normal installation steps

- 1, lift the unlock button, power on, the electromagnet coil electricity action, moving iron core from the lock block, the lock indicator, suggests that allowed to open the lock.
- 2, toggle dial button in the direction of the lock, when reach the limit position, the lock will automatically lock in open position, the lock is to lock the object. If does not reach the lock open position, the lock switch will automatically return to the lock position, "meet" automatic reset function; When lock in open position lock, lock button, the lock is returned to the lock position, so as to meet the blocking state.

## Manually unlock steps

- 1, lift the button, the power is locking loop force disconnect, lock indicator is not on, moving iron core stuck lock block, will say not allowed to open the lock;
- 2, special circumstances must be unlock, to get an unlock key and insert the unlocking hole, turned the key in the direction shown by the panel marked 90 DHS to "a" or "a", anchored off a lock of moving iron core block;

Note: to unlock the key to unlock process, is to push the core from the lock block is, to remove the effect of blocking state, and the lock must move lock using dial button, achieve the lock, so you can't directly with the unlock key lock.